

NRC WA PRC Application

March 16, 2026

Attachment E-1

Spill Management Team Support

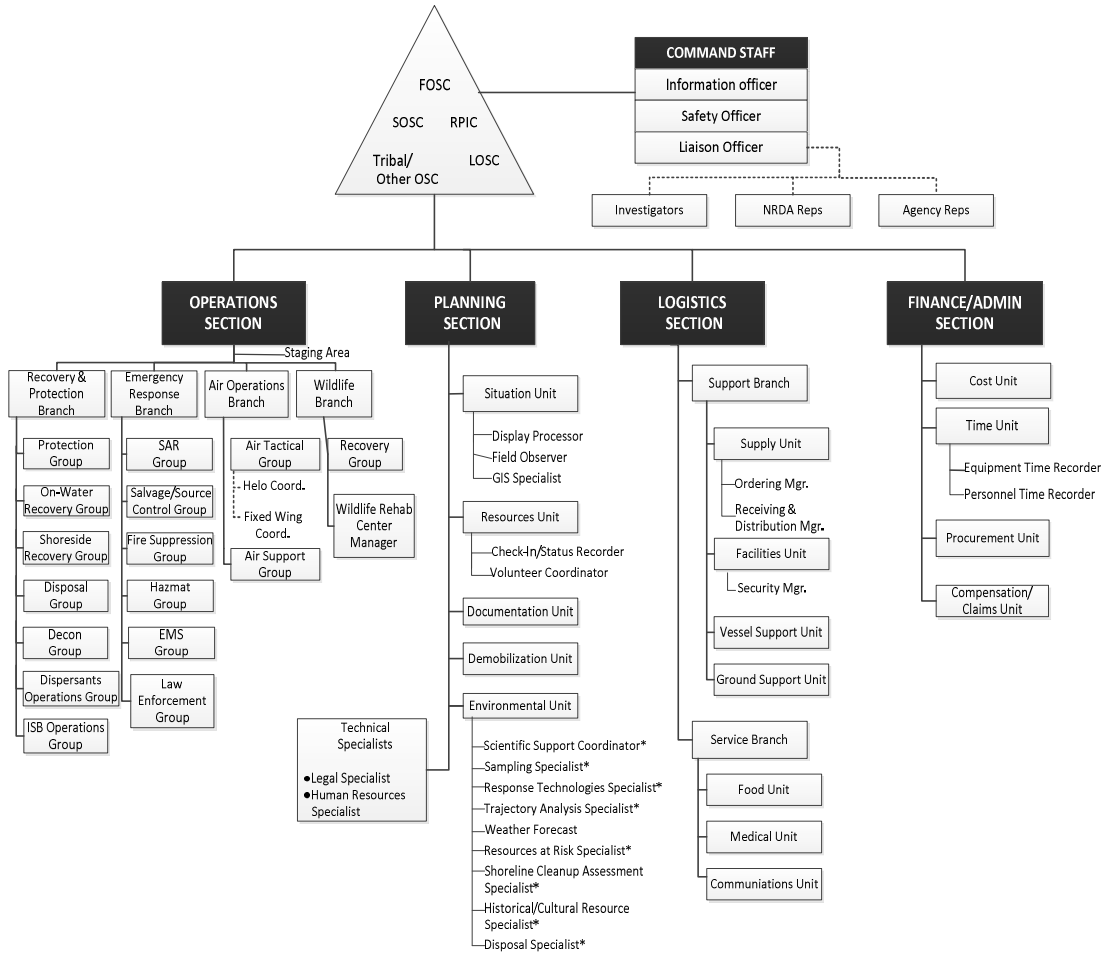
NRC maintains a qualified pool of ICS-trained personnel who support plan holders by filling positions within a Responsible Party's Spill Management Team (SMT), following the role descriptions outlined in the Northwest Area Contingency Plan. NRC personnel assigned to the SMT meet or exceed required NIMS/ICS training standards, including ICS 100, 200, 300, 700, and 800, with additional position-specific training provided as needed. Personnel who may operate in the field maintain a minimum 24-Hour HAZWOPER certification, and all full-time field staff maintain 40-Hour HAZWOPER certification.

The Incident Command System is structured around five primary functional areas that scale to any incident's size and complexity. NRC personnel integrate into this structure through established supervisory lines and reporting relationships, working under Unified Command direction to support clear authority, consistent communication, and effective operational alignment. This framework allows NRC to immediately reinforce the SMT with experienced personnel who enhance overall command capability.

In addition to NRC's in-house ICS capacity, NRC supplements SMT staffing through a contractual relationship with Witt O'Brien's, a national incident management firm with extensive oil-spill response experience. Witt O'Brien's provides qualified personnel who can fill key Command and General Staff roles, including Deputy Incident Commander (DIC), Planning Section Chief (PSC), Logistics Section Chief (LSC), and Liaison Officer (LOFR), as well as numerous lower-level positions across the Planning, Operations, Logistics, and Finance Sections. This combined approach ensures that NRC can fully staff an SMT for incidents of any scale while maintaining depth, redundancy, and specialized expertise across all ICS functional areas.

Personnel available for ICS Command Staff roles, along with their required minimum training levels, are listed in "NRC WA PRC Application 3-16-2026 Attachment C-3 – Response Personnel."

Figure 1 – ICS Structure



* Possible Assignment of Technical Specialists